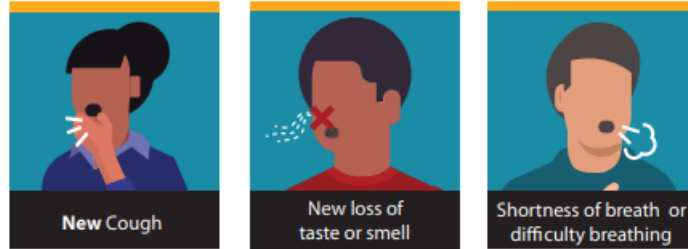
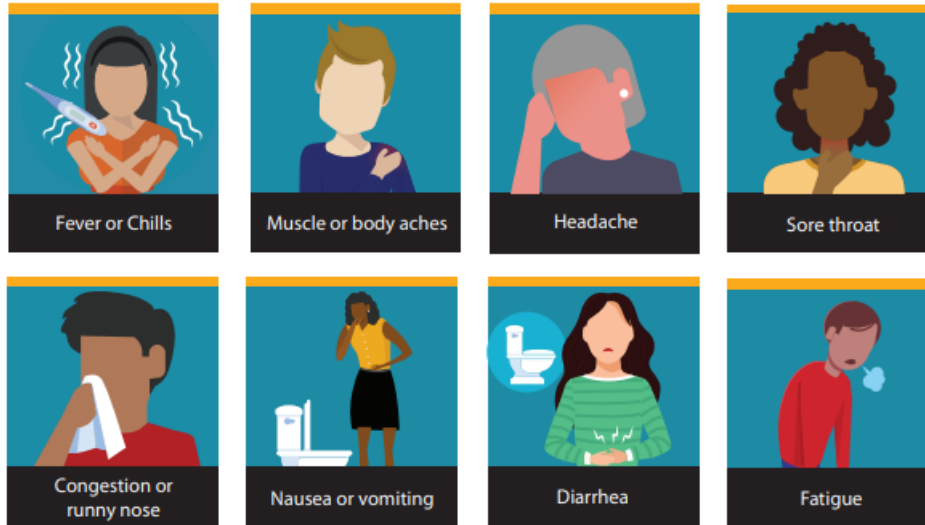


MAJOR SYMPTOMS



MINOR SYMPTOMS



If an individual is ill at school and exhibiting one or more Major Category Symptoms, or two or more Minor Category Symptoms, the School Nurse will send that individual home to be evaluated by a Healthcare Provider to rule out Covid-19 illness.

Close contacts will also be sent home when the person who is exhibiting symptoms has new loss of taste or smell, or when we receive notice that someone has tested Covid-19 Positive.

Please continue to be our first line of defense by staying home from school or work if you are experiencing any of the symptoms stated above, and contact your Healthcare Provider as needed.